

A technical line drawing of a mechanical component, possibly a valve or a housing, is shown in the background. It features a circular cross-section with internal structural details. A dimension line on the left side indicates a height of 115 units. The drawing is rendered in a light blue color on a solid blue background.

WHO NEEDS 3D PRINTING?

115



SURGEONS



SURGEONS



SCIENTISTS

115



SURGEONS

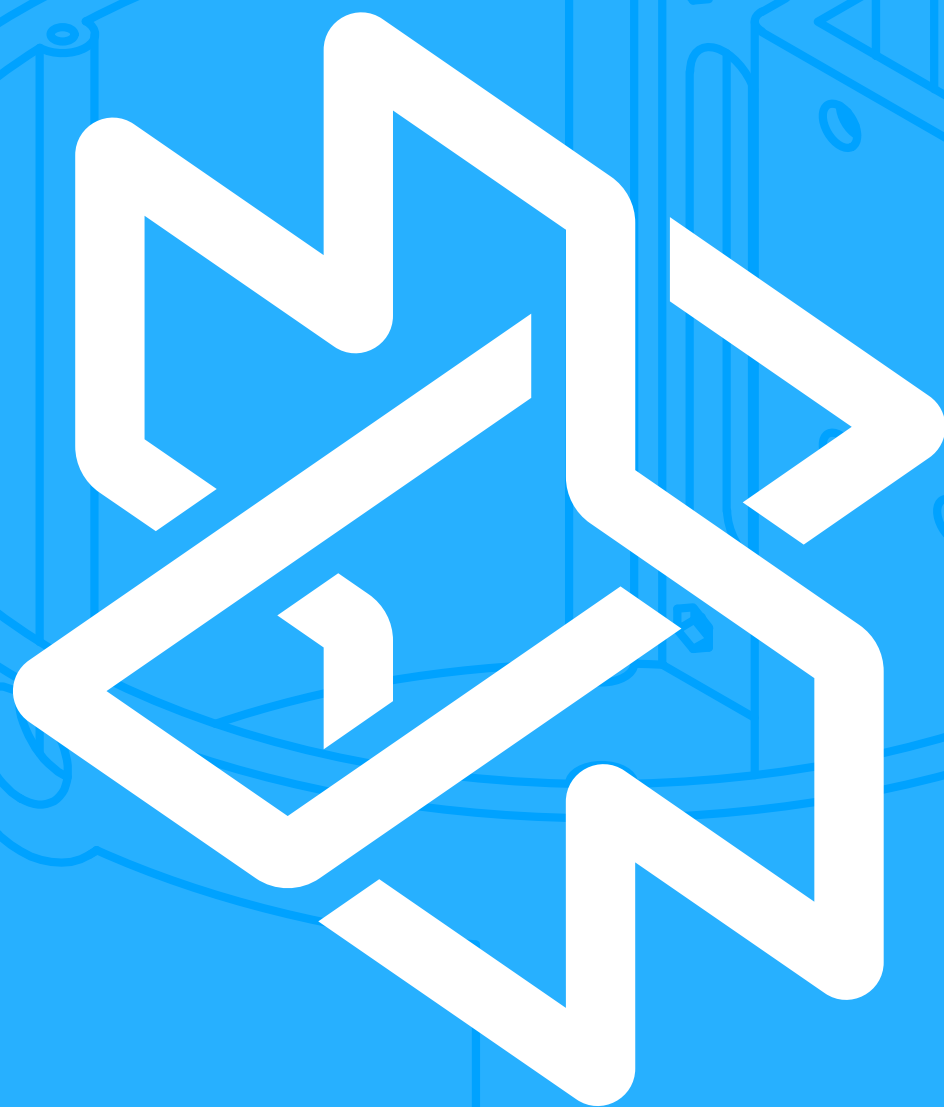


SCIENTISTS



JEWELERS

115



OPEN FACTORY

2015

\$2B



\$686M



\$80M

217,350
ESTIMATED
PRINTERS SOLD

2018

\$6B

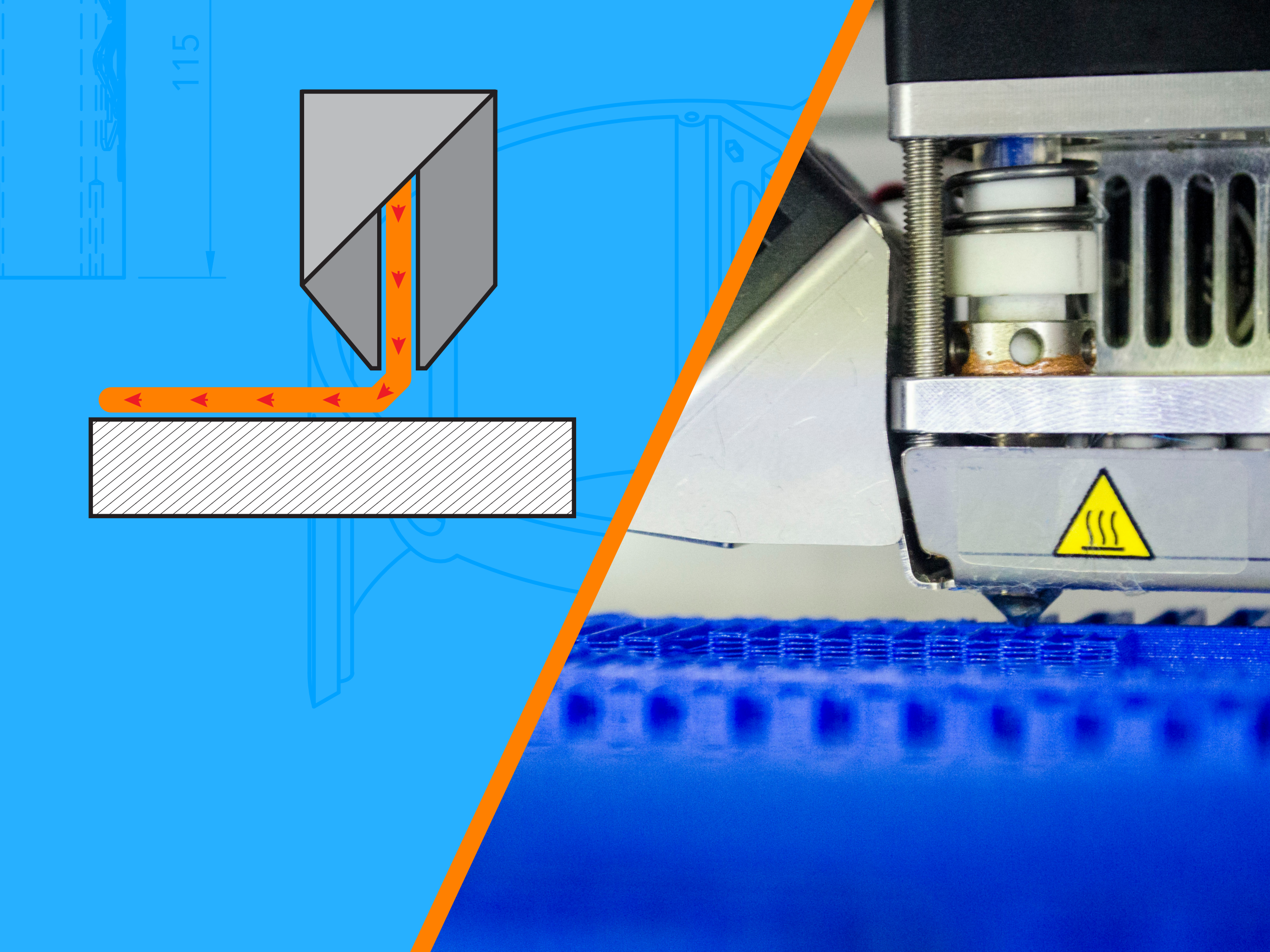


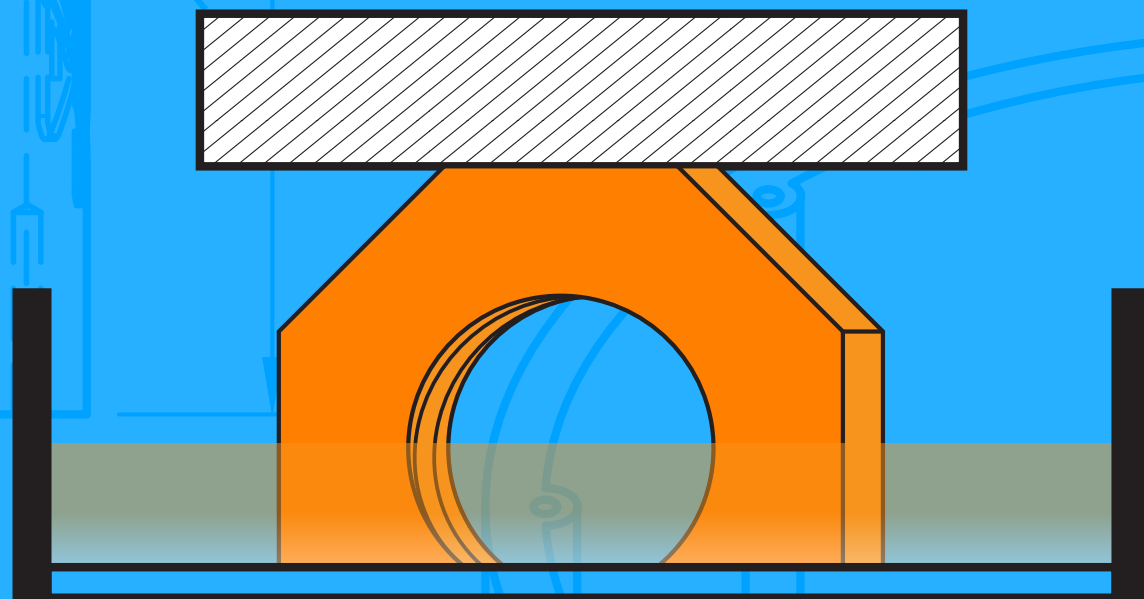
\$1B



\$150M

2.3M
ESTIMATED
PRINTERS SOLD

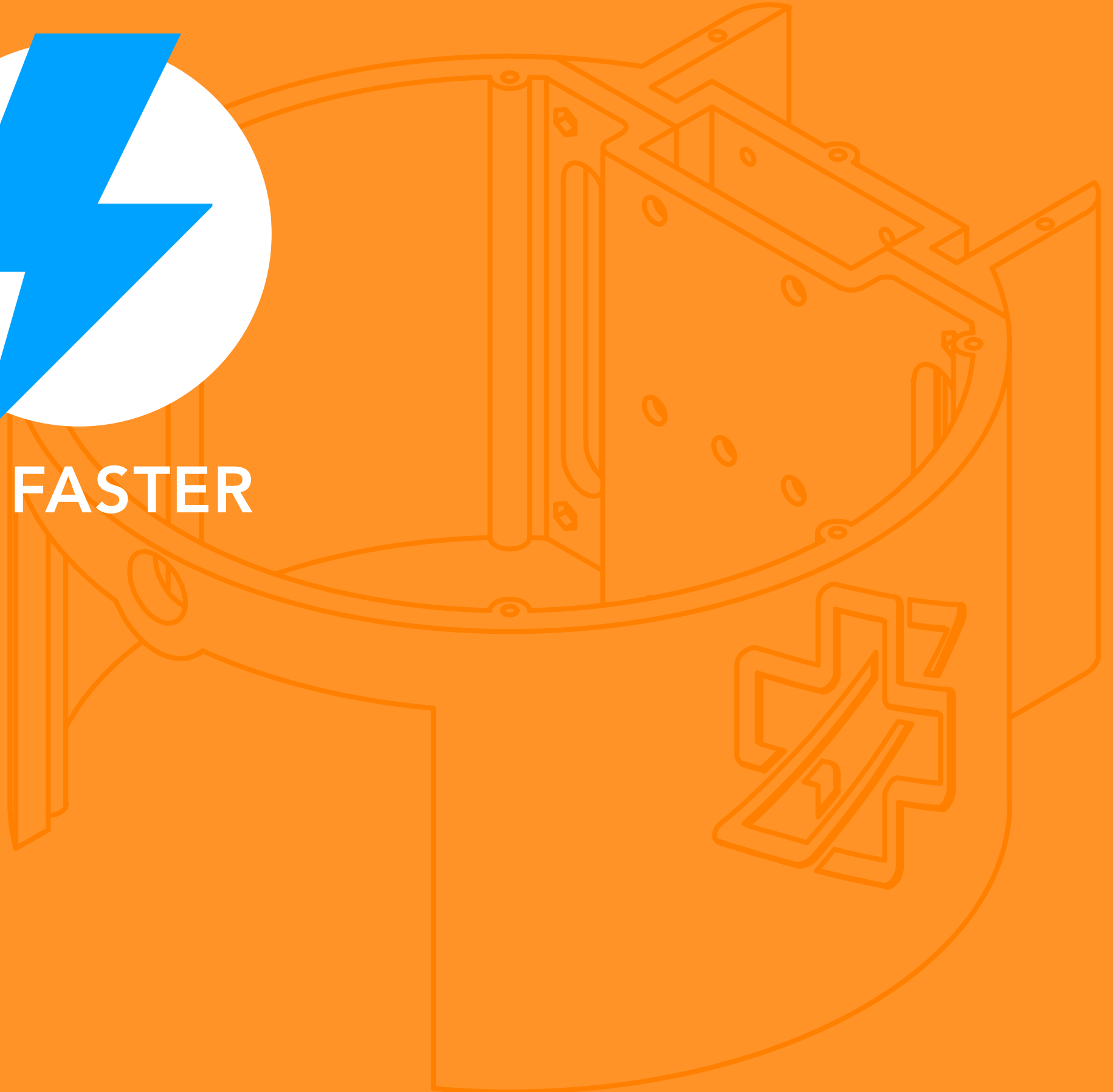




115



6X FASTER





6X FASTER



10X RESOLUTION



6X FASTER



10X RESOLUTION



OPEN SOURCE



6X FASTER



10X RESOLUTION



OPEN SOURCE



HALF THE COST







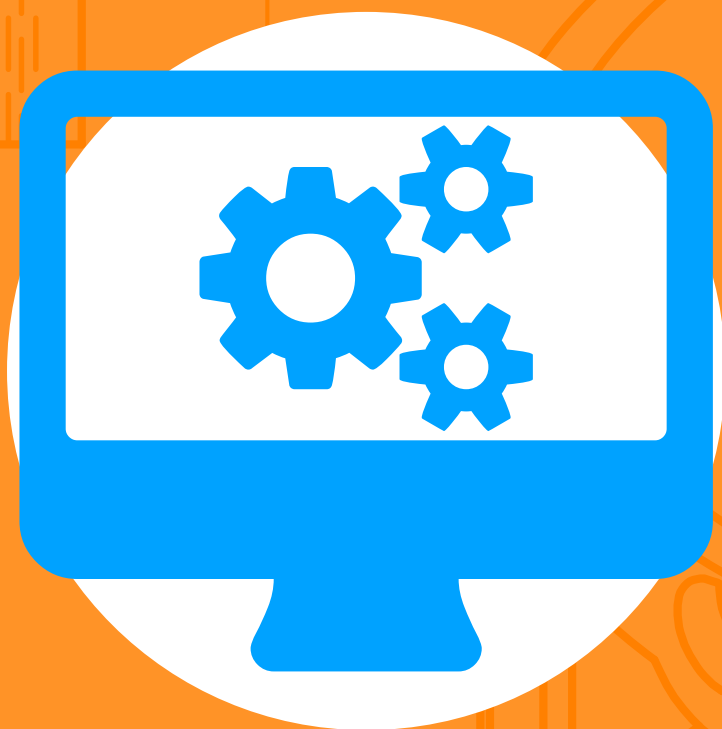
TUTORIALS
+
WEBINARS



**TUTORIALS
+
WEBINARS**



**ONLINE
STORE**



TUTORIALS
+
WEBINARS



ONLINE
STORE



ASSEMBLED
OR KIT

INDUSTRY
EXPERIENCE

LED BUILD
WORKSHOPS

REVIEWED
3D PRINTERS

INSTRUCTOR

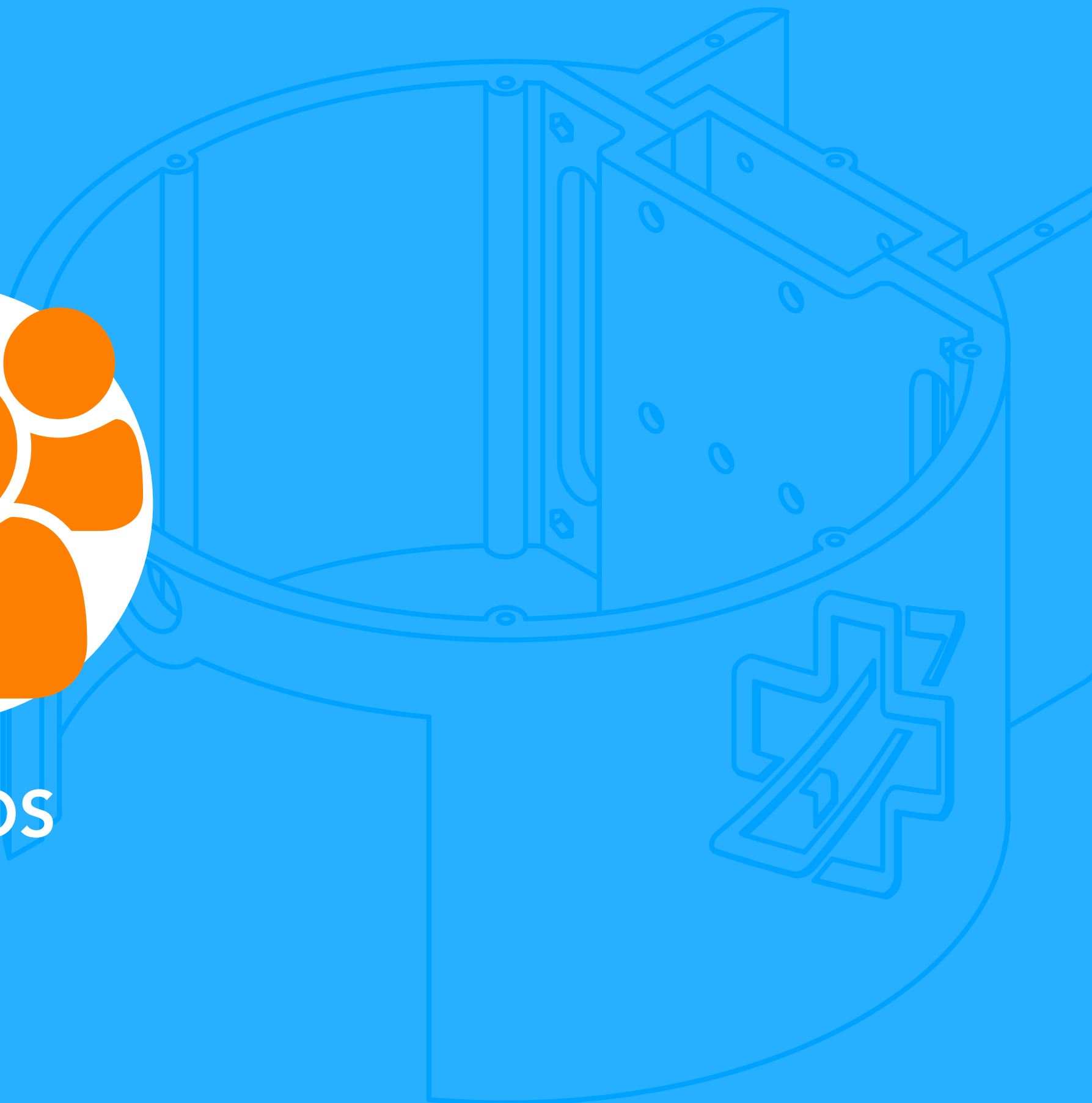


**CLYDE BOYER***Trinity Education Group***JORDAN MILLER***Rice University***JEFF REICHMAN***January Advisors***SAMEER
VACHANI****MATT PEÑA***Rice University***DAVE MORRIS***3D CAMP Houston***STEVE
KELLY****MATTHEW
WETTERGREEN***Rice University***CHRIS CHURCH***MacroFab***BAGRAT
GRIGORYAN***Rice University*

115



INTROS





INTROS



SURGEONS



SCIENTISTS



JEWELERS

115



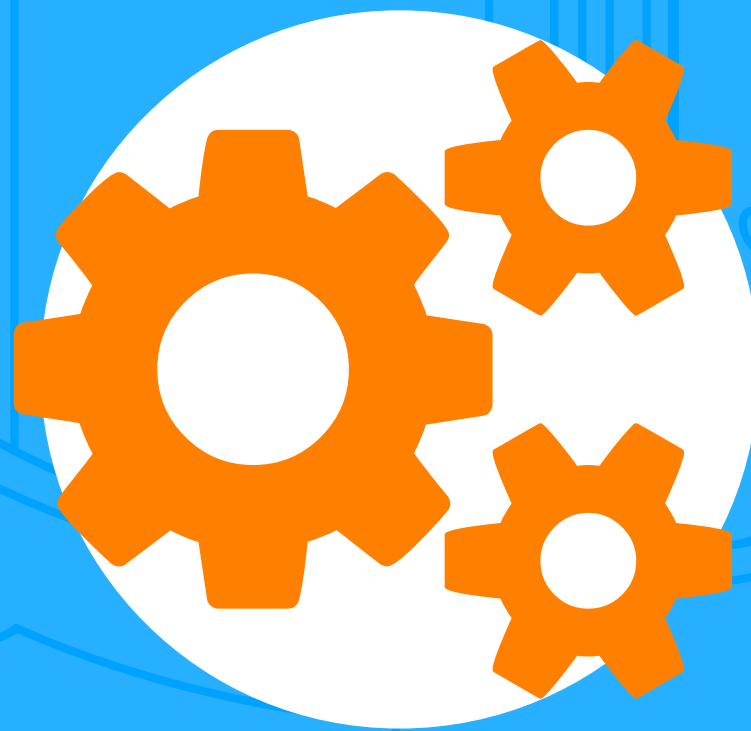
INTROS



TEAM



INTROS



TEAM



PARTNERSHIPS



OPEN FACTORY